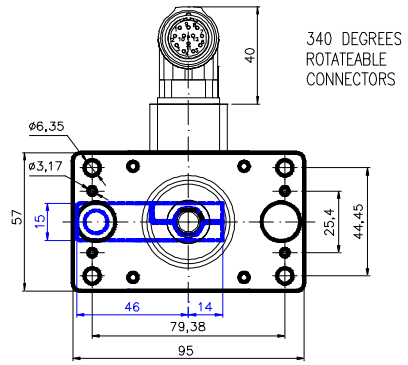
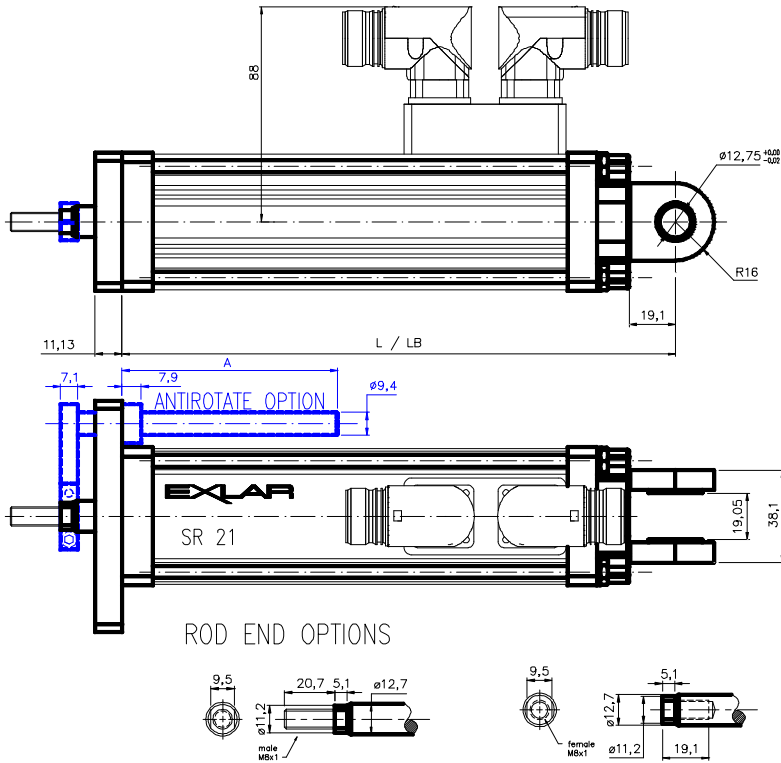


Massblatt / drawing : SR 21

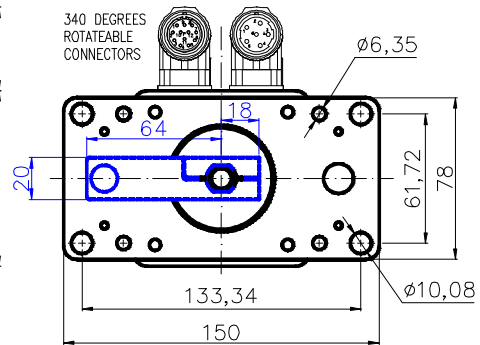
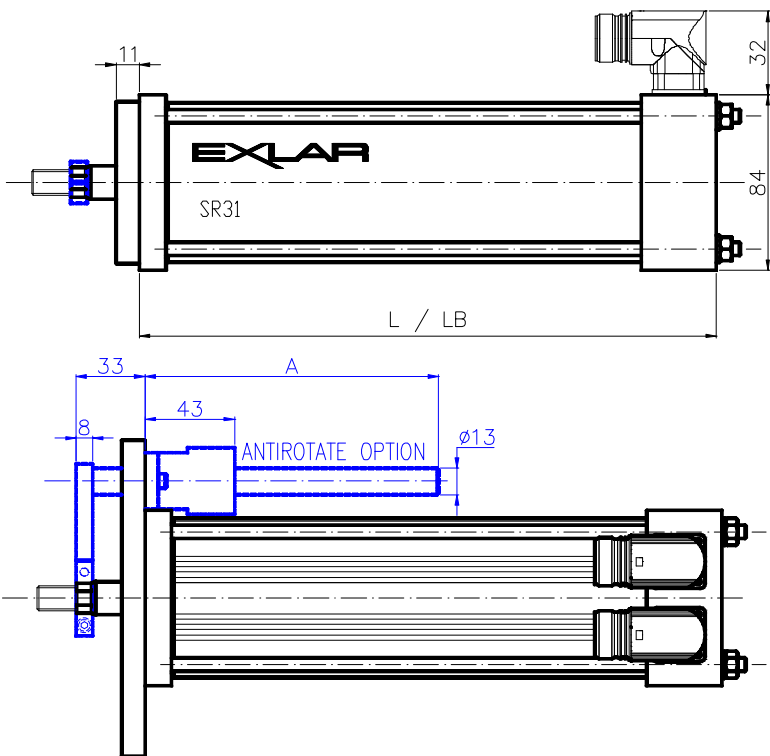


Motor	Hub /stroke	Länge /length	L. mit Bremse /L. with broke	AR Länge /AR Length
SR 21-03X	75	209	257	89
SR 21-06X	150	285	333	165
SR 21-12X	300	438	486	318

bei 300 mm Hub ist eine zweite Drehmomentstütze gegenüberliegend angeordnet
 / Anti-Rotate Rods Both Sides for 300 mm stroke
 Mit Bremse +48,3 mm
 /with brake unit add 48,3mm

ROD END OPTIONS

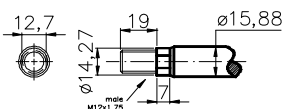
Massblatt / drawing : SR 31



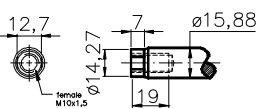
Motor	Hub /stroke	Länge /length	L. mit Bremse /L. with broke	AR Länge /AR Length
SR 31-06X	150	289	321	165
SR 31-10X	250	403	435	267

bei 250 mm Hub ist eine zweite Drehmomentstütze gegenüberliegend angeordnet
 / Anti-Rotate Rods Both Sides for 250 mm stroke
 Mit Bremse +45 mm
 /with brake unit add +45mm

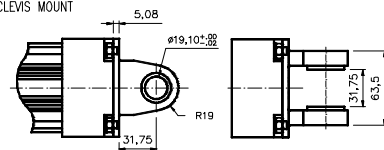
ROD END OPTIONS



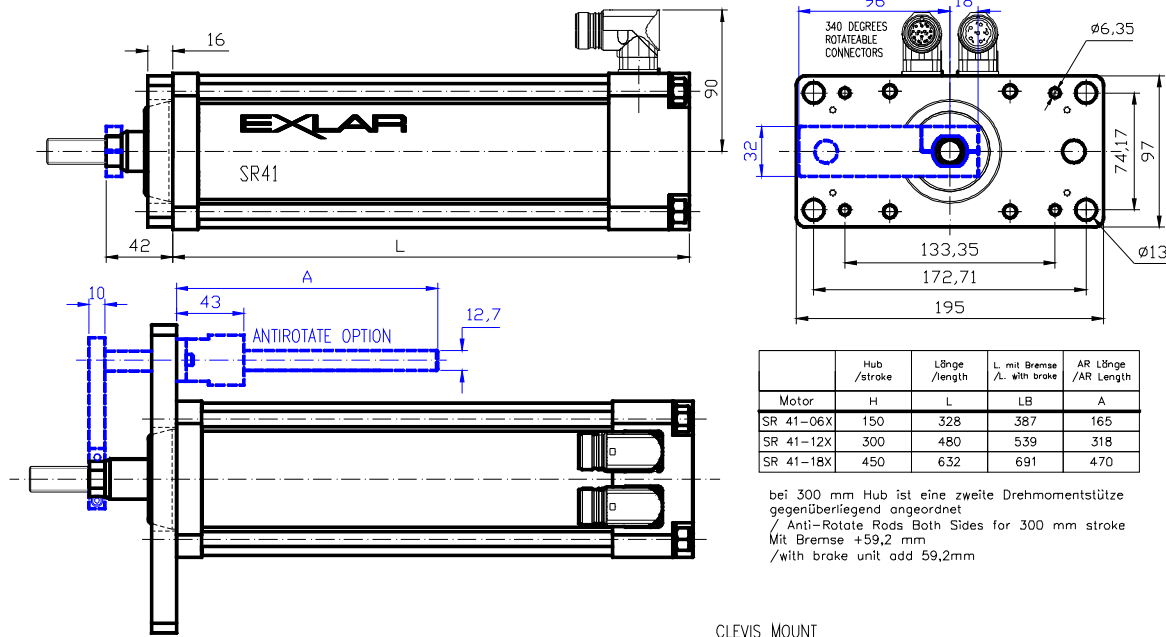
ROD END OPTIONS



CLEVIS MOUNT



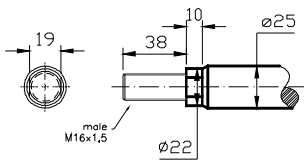
Massblatt / drawing : SR 41



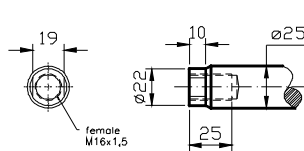
Motor	Hub /stroke	Länge /length	L. mit Bremse /L. with brake	AR Länge /AR Length
SR 41-06X	150	328	387	165
SR 41-12X	300	480	539	318
SR 41-18X	450	632	691	470

bei 300 mm Hub ist eine zweite Drehmomentstütze gegenüberliegend angeordnet
 / Anti-Rotate Rods Both Sides for 300 mm stroke
 Mit Bremse +59,2 mm
 /with brake unit add 59,2mm

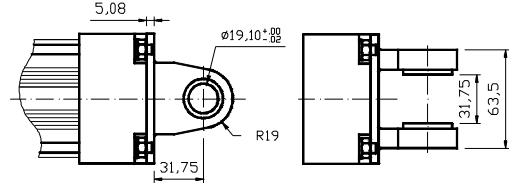
ROD END OPTIONS



ROD END OPTIONS

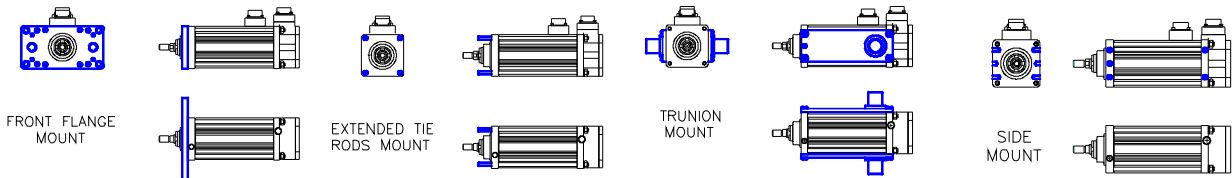


CLEVIS MOUNT



This drawing is accessible on-line at : <http://www.a-drive.de/download/sr/>

Mounting options



Flansch

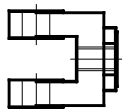
Verlängerte Gewindestange

Gelenkzapfen

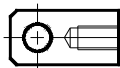
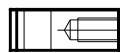
Seitliche Montage

Mounting options

ROD CLEVIS



ROD EYE



SPHERICAL ROD EYE

